



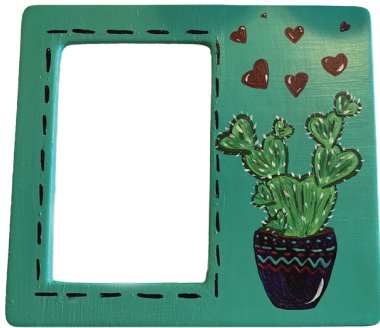
Love Grows Here Frame Kit

Materials Included:

- Ceramic Picture Frame w/Glass and Backing
- Pink, White, Purple, Bright Green, Dark Green, Teal, Brown Acrylic Paints
- Cactus Template
- Paint Brush

Instructions

- Step 1:** Set glass and frame backing aside for later. Paint the front and edges of the Ceramic Picture Frame with 2 coats of Teal Acrylic Paint. Let paint dry completely (should only take a few minutes).
- Step 2:** Once the paint is totally dry. Cut out the outline of the Cactus Template. Using a pencil or magic marker trace the cactus outline on the side of the picture frame. You can look at the template and draw in the additional outlines on the cactus and flower pot.
- Step 3:** Next paint the flower pot with 2 coats of Purple Acrylic Paint. Let dry.
- Step 4:** Paint the cactus with 2 coats of Bright Green Acrylic Paint. While the Bright Green is still wet take the Dark Green Acrylic Paint and add some brushy marks for texture. Then use the Dark Green to outline the cactus. (Tip: When outlining, refer to the template for guidance.) Let dry.
- Step 5:** Paint in the soil under the cactus with Brown Acrylic Paint. Let dry.
- Step 6:** Using the Pink Acrylic Paint, add some hearts to decorate above the cactus. Let dry.
- Step 7:** Next using the Purple Acrylic Paint, add decorative dash marks around the photo area of the frame. Let dry.
- Step 8:** Then add the needles on the cactus with the White Acrylic Paint. Be sure to add some inside and around the edge of the cactus.
- Step 9:** Using the White Acrylic Paint, add highlight marks on the hearts and on the bottom of the flower pot. Let dry.
- Step 10:** Next using the Teal and Pink Acrylic Paint, add some decorative dots, zig zags, and dash marks on the top of the flower pot. Let all the paint dry completely.
- Step 11:** Once your frame is totally dry, flip your frame over. Insert the glass into photo slot on the back of the frame. Then using your choice of glue, attach the frame backing on the back of the frame. Double check the position of your frame and the backing to make sure you don't have the stand/hanger upside down on your frame. Place something heavy (like a book) on top of the backing and let the glue dry for a few hours. Once the glue is dry and the backing is secure, add your favorite photo and enjoy!



Love Grows Here Frame Kit

Materials Included:

- Ceramic Picture Frame w/Glass and Backing
- Pink, White, Purple, Bright Green, Dark Green, Teal, Brown Acrylic Paints
- Cactus Template
- Paint Brush

Instructions

- Step 1:** Set glass and frame backing aside for later. Paint the front and edges of the Ceramic Picture Frame with 2 coats of Teal Acrylic Paint. Let paint dry completely (should only take a few minutes).
- Step 2:** Once the paint is totally dry. Cut out the outline of the Cactus Template. Using a pencil or magic marker trace the cactus outline on the side of the picture frame. You can look at the template and draw in the additional outlines on the cactus and flower pot.
- Step 3:** Next paint the flower pot with 2 coats of Purple Acrylic Paint. Let dry.
- Step 4:** Paint the cactus with 2 coats of Bright Green Acrylic Paint. While the Bright Green is still wet take the Dark Green Acrylic Paint and add some brushy marks for texture. Then use the Dark Green to outline the cactus. (Tip: When outlining, refer to the template for guidance.) Let dry.
- Step 5:** Paint in the soil under the cactus with Brown Acrylic Paint. Let dry.
- Step 6:** Using the Pink Acrylic Paint, add some hearts to decorate above the cactus. Let dry.
- Step 7:** Next using the Purple Acrylic Paint, add decorative dash marks around the photo area of the frame. Let dry.
- Step 8:** Then add the needles on the cactus with the White Acrylic Paint. Be sure to add some inside and around the edge of the cactus.
- Step 9:** Using the White Acrylic Paint, add highlight marks on the hearts and on the bottom of the flower pot. Let dry.
- Step 10:** Next using the Teal and Pink Acrylic Paint, add some decorative dots, zig zags, and dash marks on the top of the flower pot. Let all the paint dry completely.
- Step 11:** Once your frame is totally dry, flip your frame over. Insert the glass into photo slot on the back of the frame. Then using your choice of glue, attach the frame backing on the back of the frame. Double check the position of your frame and the backing to make sure you don't have the stand/hanger upside down on your frame. Place something heavy (like a book) on top of the backing and let the glue dry for a few hours. Once the glue is dry and the backing is secure, add your favorite photo and enjoy!